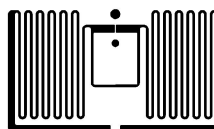


## Overview



### Frequency Band

860MHz-960MHz

### Chip

MR6

### Antenna Dimensions

12.5x22mm/0.49x0.87inch

### International Standard

ISO/IEC 18000-63 Type C

### Applications

Jewelry

Medicine

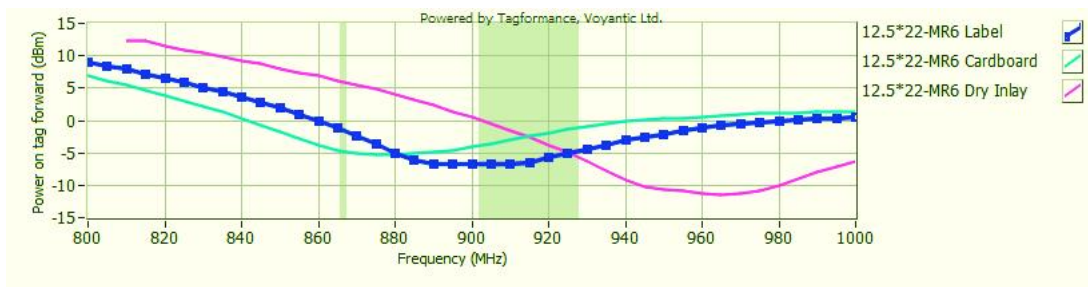
This antenna is designed for Jewelry and medicine applications. Its high efficiency and excellent performance make it widely used in jewelry and medicine fields. The deployment of RFID technology in jewelry and medicine will realize the information, precise and efficient management of jewelry and medicine asset.

OSRFID has an in-house R&D team well equipped with state of art Lab equipment which can customize a suitable label for your real-world applications.

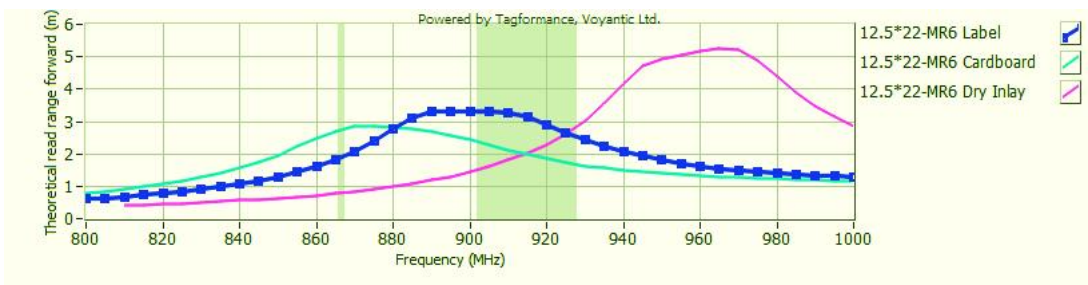
### Technical Features

| Model                 | OS31061                       | OS33195          |
|-----------------------|-------------------------------|------------------|
| Delivery Format       | Dry Inlay                     | Label            |
| EPC Memory            | 96Bits                        | 96Bits           |
| User Memory           | 0Bits                         | 0Bits            |
| Die-cut Dimension     | -                             | 25*15mm          |
| Inlay Substrate       | 50um PET                      | 50um PET         |
| Standard Pitch        | 19.05mm                       | 19.05mm          |
| Web Width             | 35mm                          | 41mm             |
| Core Size             | 76.2mm/3inch                  | 76.2mm/3inch     |
| Quantity / Reel       | 10000 ± 300Pcs/Reel           | 2000 ± 2Pcs/Reel |
| Operating Temperature | -20℃ to +50℃ (20% to 80%RH)   |                  |
| Remarks               | Other size can be customized. |                  |

## Sensitivity



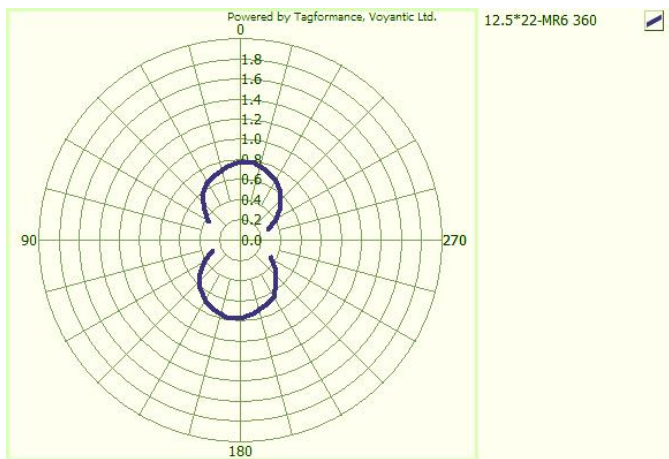
## Read Range



Sensitivity&Read Range Test power: 4W EIRP

For countries that allow 2W ERP, please reduce the result by 11%

## Orientation sensitivity



All graphs are indicative: performance in real life applications may vary.